



The
ROYAL
SONESTA
WASHINGTON DC
CAPITOL HILL

NEVER A BORED MEMBER.

THE ROYAL SONESTA WASHINGTON, DC CAPITOL HILL

The Royal Sonesta Washington, DC Capitol Hill offers the ideal blend of service, style, and sustainability. With its curated selection of commissioned artworks, light-filled event spaces, and the largest standard hotel guest rooms in Capitol Hill, we make it our business to elevate your experience.



PROPERTY HIGHLIGHTS

- 274 artfully inspired hotel rooms featuring 16 suites across five floors
- Bistro du Jour – KNEAD Hospitality + Design
- Fitness center and yoga studio
- Ample lobby networking and collaboration spaces
- Valet parking service and EV Charging Stations
- Vegetated Green Roof with Trellis
- LEED Gold Certified and WELL Certified Core/Shell
- 12,000 sq. ft. of modern and flexible event space

MEETING AND EVENT SPACE

- 12,000+ sq. ft. of flexible, airy, innovative event spaces accommodating board meetings of 8 to large conferences and events for 300+ guests.
- **West Atrium:** 2,400+ sq. ft. 10-story atrium space combines monumental scale and daylight through a magnificent skylight feature. Providing natural light, an art feature along the signature wall, programming zones and opportunities to expand into the West Atrium Lobby with an additional 1,085 sq. ft. of event space.
- **The Crown Ballroom:** 3,100 sq. ft. + 380 sq. ft. private terrace on the 11th floor with expansive views of Union Station & DC landmarks to the east and glass wall overlooking the 10 story skylit atrium to the west, featuring built in AV and Power features.
- **Jewel Conference Center:** 2,600+ sq. ft. of flexible meeting rooms located on the 11th floor, divisible into three (3) sections, all of which adjoin to the Penthouse Pre-Function space and 1,100+ sq. ft. Terrace.
- **Sonesta Work Suite:** Offering a transformational way to work, meet and collaborate featuring five elements—Innovative Design, Intuitive/User-Friendly Technology, Enticing F&B Options, Enhancements to Tickle the Brain & Spark Conversation AND Ease of Booking.

AREA INFORMATION

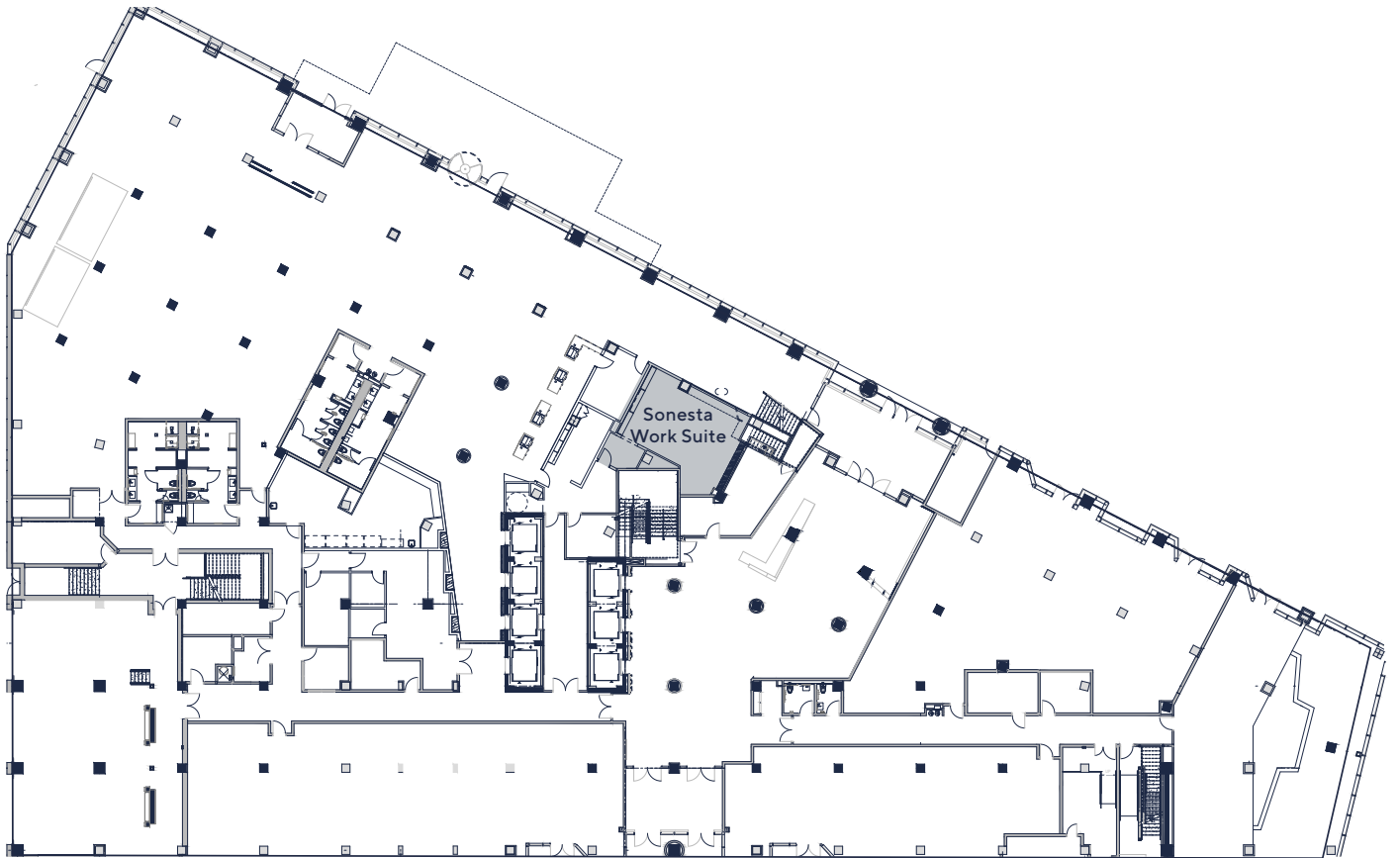
Located in one of DC's most walkable intersections, reach upscale dining, thriving business & political hubs, iconic national landmarks and inspiring cultural institutions from Massachusetts Avenue and North Capitol Street.

- Union Station
- Georgetown University Law Center
- US Capitol
- Library of Congress
- Capital One Arena
- Union Market
- The Smithsonian Institution
- The National Mall



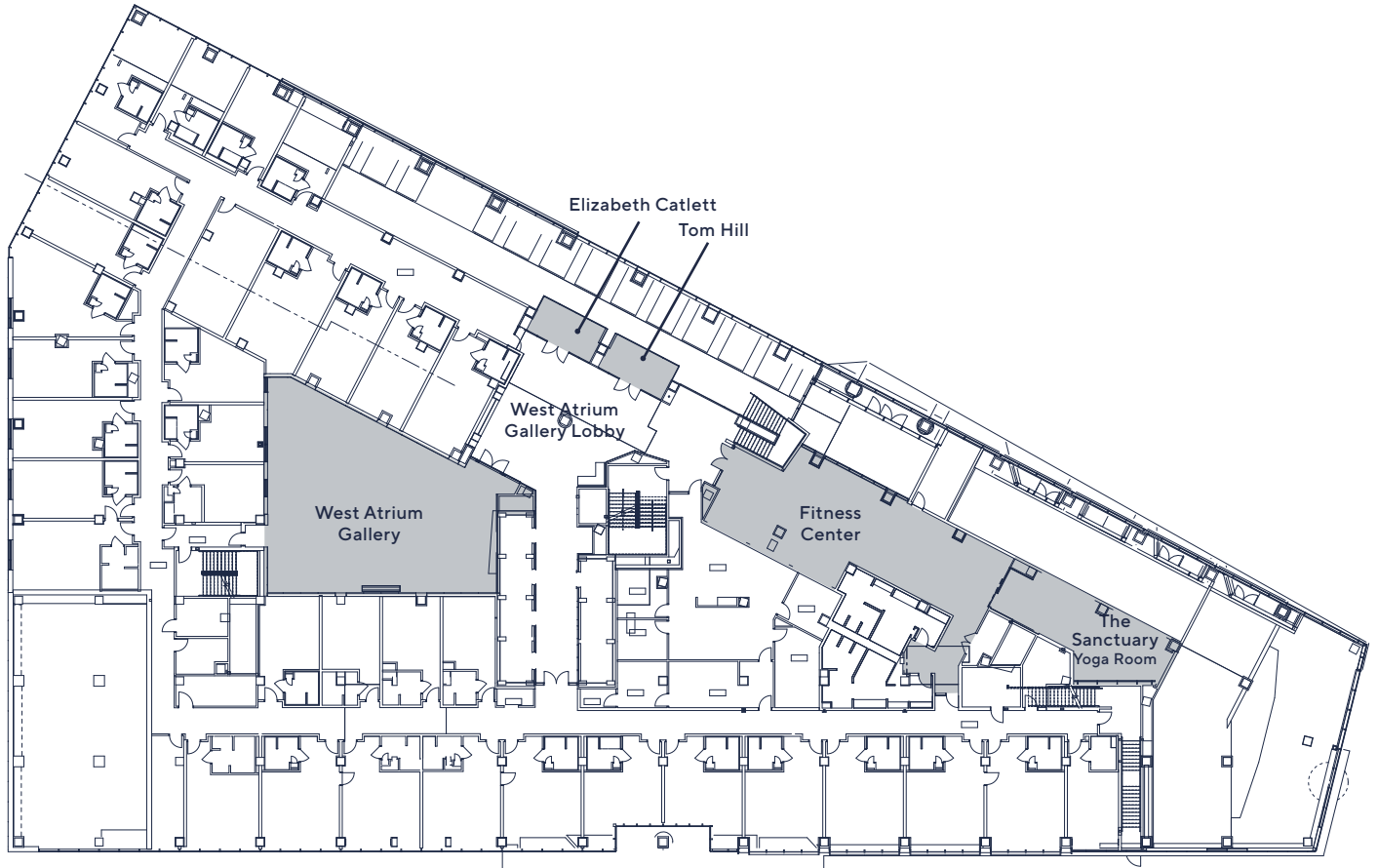
MEETING & EVENT SPACE

THE ROYAL SONESTA WASHINGTON, DC CAPITOL HILL
FIRST FLOOR LOBBY



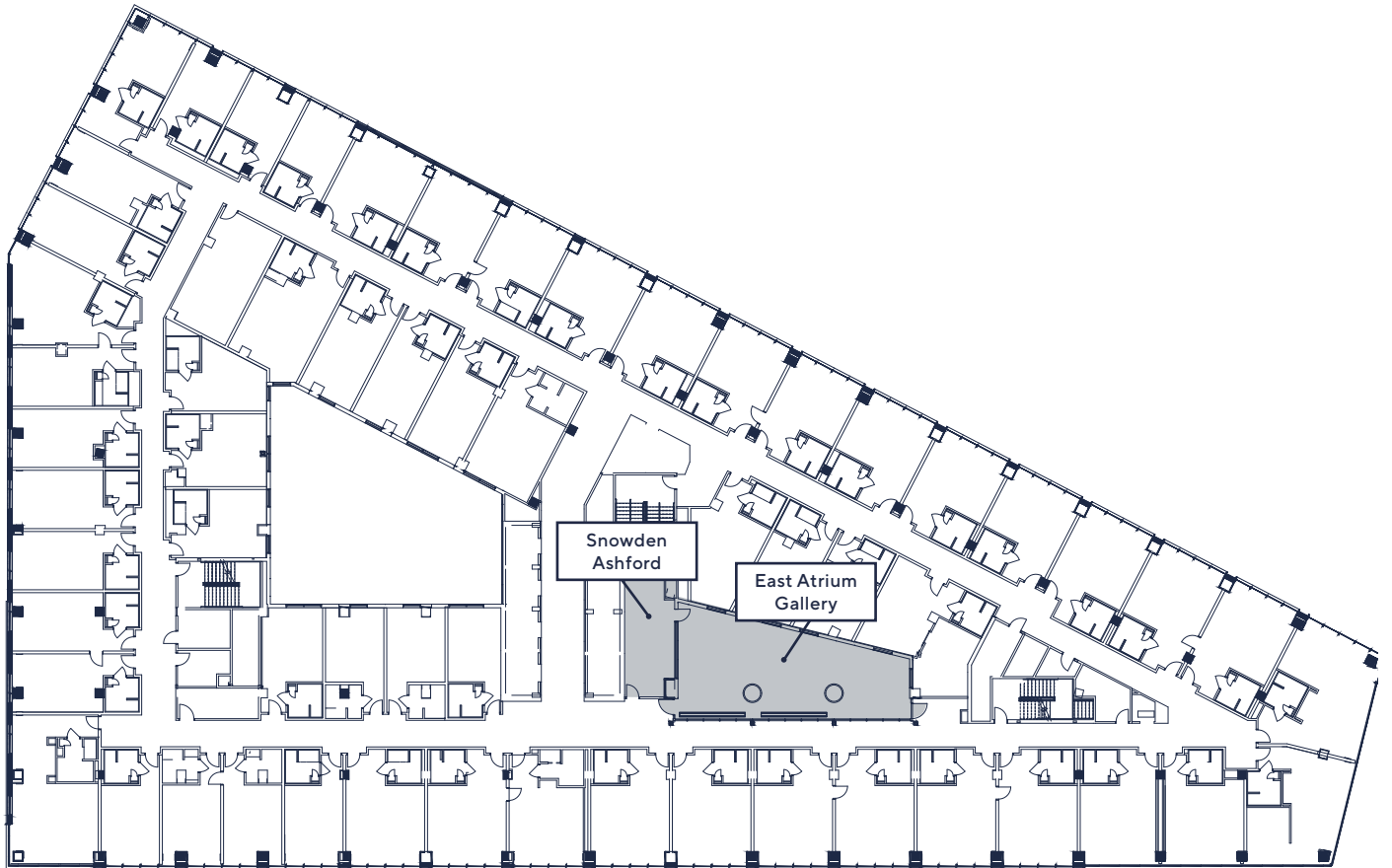
MEETING & EVENT SPACE

THE ROYAL SONESTA WASHINGTON, DC CAPITOL HILL
SECOND FLOOR MEETING ROOMS



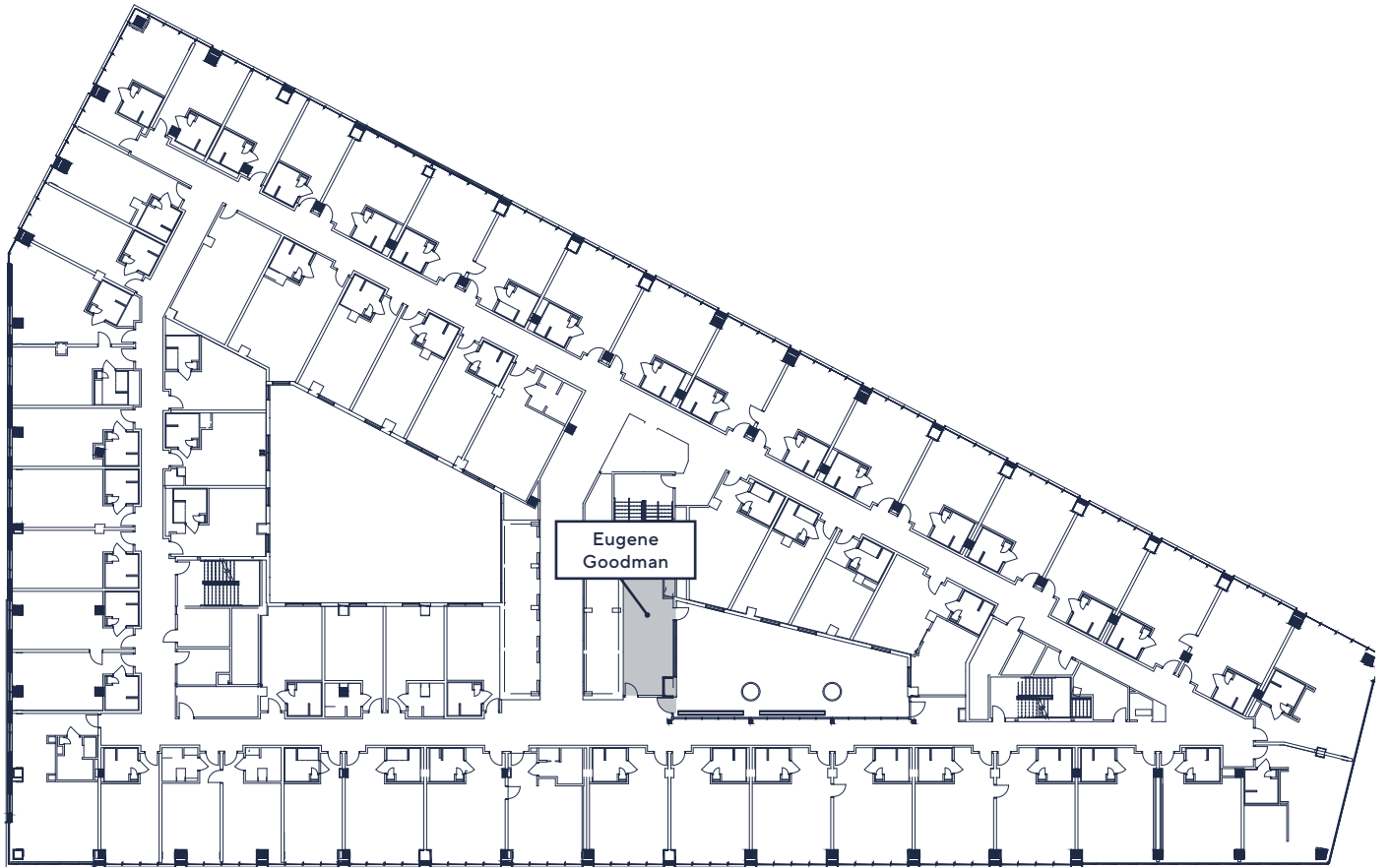
MEETING & EVENT SPACE

THE ROYAL SONESTA WASHINGTON, DC CAPITOL HILL
THIRD FLOOR MEETING ROOMS



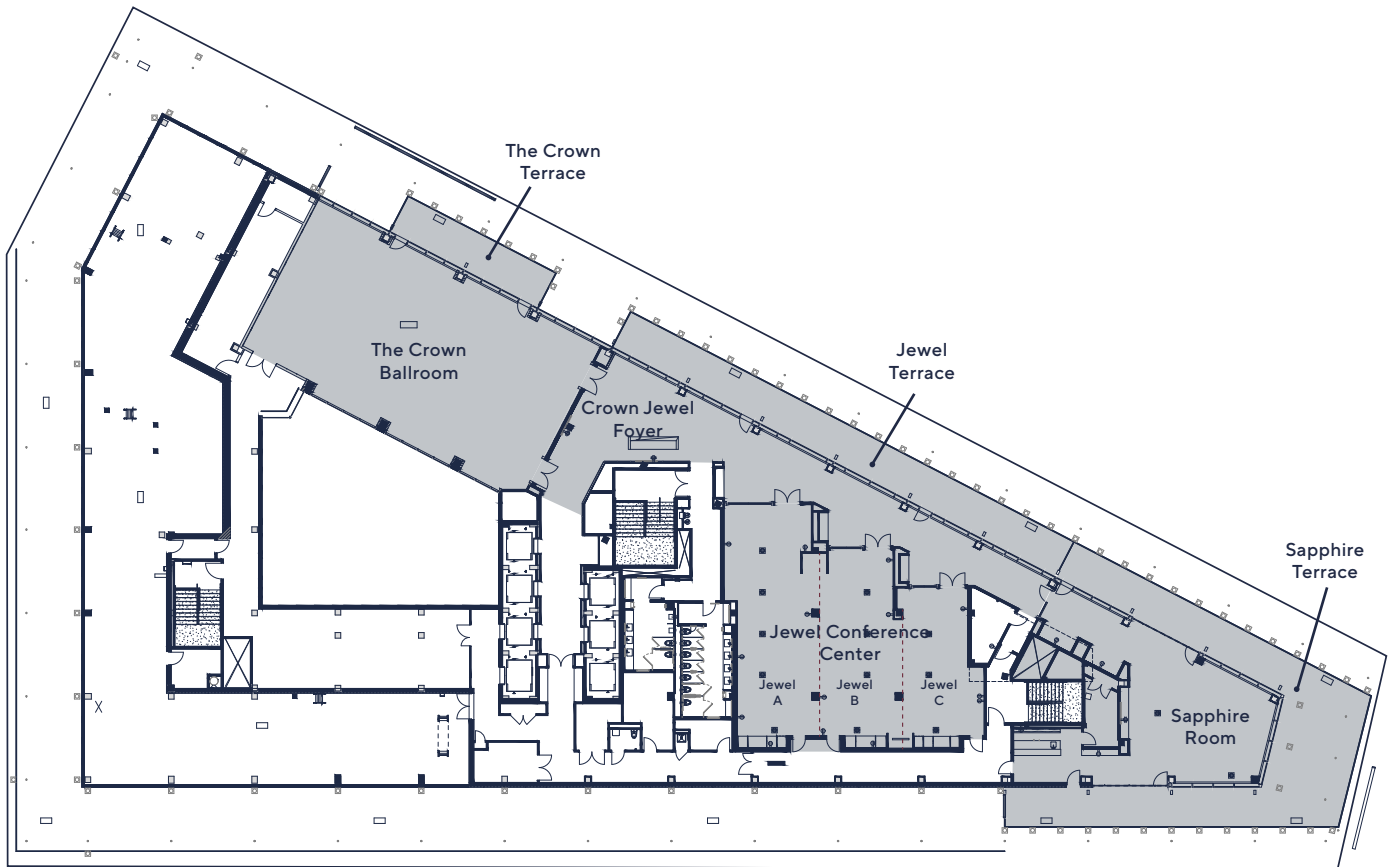
MEETING & EVENT SPACE

THE ROYAL SONESTA WASHINGTON, DC CAPITOL HILL
SIXTH FLOOR MEETING ROOMS



MEETING & EVENT SPACE

THE ROYAL SONESTA WASHINGTON, DC CAPITOL HILL
ELEVENTH FLOOR – PENTHOUSE MEETING ROOMS





THE CROWN BALLROOM



SONESTA WORK SUITE



TOM HILL BOARDROOM



CAPITOL HILL SUITE



CROWN JEWEL TERRACE



THE WEST ATRIUM GALLERY



The
ROYAL
SONESTA
WASHINGTON DC
CAPITOL HILL

20 MASSACHUSETTS AVE NW
WASHINGTON, DC
20001

RSCAPITOLHILLSALES@SONESTA.COM



[/TheRoyalSonestaCapitolHill](https://www.facebook.com/TheRoyalSonestaCapitolHill) [@RoyalSonestaCapitolHill](https://www.instagram.com/RoyalSonestaCapitolHill)